

# HARVEST & REPLANT

FOR A SUSTAINABLE SUPPLY OF  
CARBON-STORING WOOD PRODUCTS



**Managed forests and wood products are a critical tool for fighting climate change.**

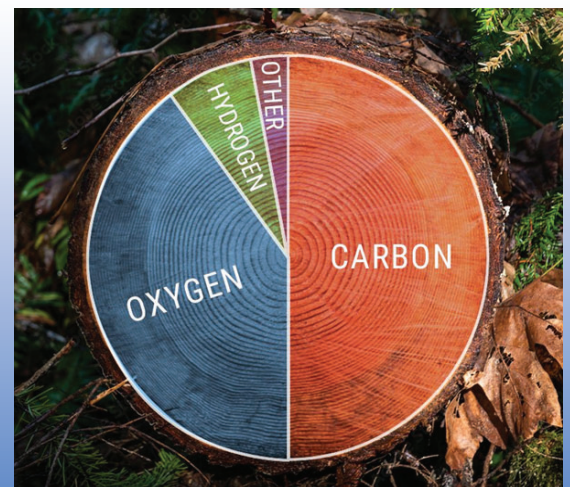
**Forest management is the practice of sustainably harvesting forest lands for wood products and to keep forests healthy, including replanting three trees for every one harvested.**

**Planting and harvesting trees stores carbon for the life of the wood product.**

Through the process of photosynthesis, growing trees absorb carbon dioxide that exists in our atmosphere and converts the carbon into a solid form within the tree. 53% of a tree's carbon remains stored in long-lived wood products.

**Harvesting trees to produce wood products transfers forest carbon stored in wood into the built environment to substitute for less carbon friendly alternatives.**

Science reveals that growing, harvesting trees, using wood products, replanting, and then repeating the cycle stores more carbon over time than unmanaged forests, and generates a net sequestration of carbon which can offset other large emissions, such as in energy creation or transportation. Forests & wood products offset 35% of WA's carbon footprint.



**The dry weight of tree wood is solid carbon.**

**For more information, email [info@wfpa.org](mailto:info@wfpa.org).**



**WFPA**